

T76494-TE

MADE IN THE U.S.A.

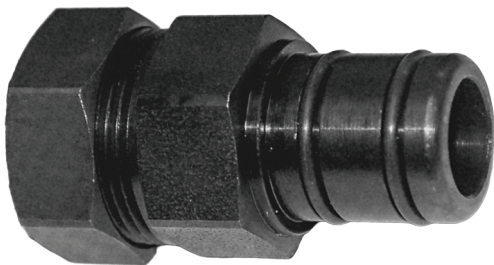


FITZall

Ford Tube Repair

Filler Tube Compression Fitting

Easy to Use
Works with most Ford Filler Tubes
For details see back



- 1 Compression Fitting
- Installation Instructions



7 57738 42015 9

T76494-TE Installation Instructions

FORD FILLER TUBE FITTING INSTALL

Compatible with
Most RWD Ford Transmissions

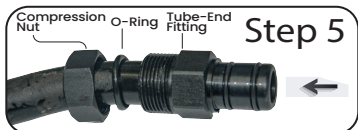
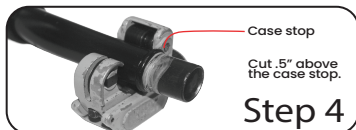
Does not work in:

C-3, C-4, A4LD, 4R44, AMX, and
all Medium Case Cast Iron Ford Transmissions

Full and Stub Filler Tube End Repair

1. We suggest that you don't remove the tube completely.
2. Pry tube out with screwdriver.
3. Clean tube end.
4. Use tubing cutter to remove the bottom of the tube 0.5" above the case stop on the tube, deburr. (Fitzall: T136494-TR to help round)
5. Place the cut end into the compression side of the fitting until it bottoms.
6. Tighten the compression fitting onto the tube. (1-1/8" and 1" wrenches needed)
Do not use torque in excess of 20 ft-lb.
7. Insert tube end into case, do not use sealer.

T136494-TR TUBE REPAIR TOOL



T136494-TR
If tube-end is mishappen use this
tool to help reshape the tube-end.



**T136494-TR not included*



Fitzall Support:
1-800-527-2544
www.fitzall.com