

INSTALLATION INSTRUCTIONS

Part# T74498-1A (Ball/Bell type shaft)

Shift Cable Repair End (Grommet)

Fits: GM 4L60E, 4L65E, 4L70E & FORD CD4E Vehicles w/ Floor Shifters.

1. Using 13/32" drill bit, drill out the broken pieces of the old clip from the cable end. (Fig. 1)
2. Install the new clip into the shift cable. (Fig. 2 & 3)
3. Snap the cable onto the shift arm.
4. Check the connection to insure that the clip is secure.

NOTE: For use on "Ball" and "Bell" shaped shafts. (Fig. 4)



FIG. 1



FIG. 2



FIG. 3

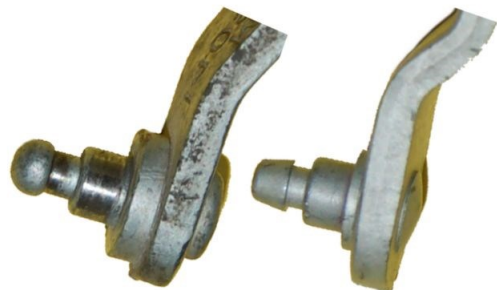


FIG. 4

Teckpak Hotline: 1-800-527-2544
www.teckpak-fitzall.com